



# Work Load Manager to Control-M

A deliberate Conversion within stipulated timeframe



## Overview

*One of the topmost US based Health Care Insurance Company wanted to increase its value to customer by converting more than 60 thousand critical production health insurance claims processing jobs that run 24/7 365 days from one scheduling tool to other. Client was committed to complete this conversion within 9 months of stipulated timeframe. Tetrasoft accepted this fixed bid stipulated timeframe conversion project and completed within specified 9 months of timeframe and with 100% accurate results.*

## Problem Statement

*Conversion was necessary in order to remediate a long standing series of security exceptions and mitigate risk of unrecoverable failures. Space constraint issue leads to latency of jobs. In WLM User level access could not be restricted. This has caused accidental deletions/overwrites of the code by application teams and requires frequent code audits by WLM team and high increase in manual efforts. Due to Inconsistency with WLM scheduler tool risk of unrecoverable failures. Outages in the WLM environment will put business critical deliverables at risk including ones with performance penalties and regulatory implications.*



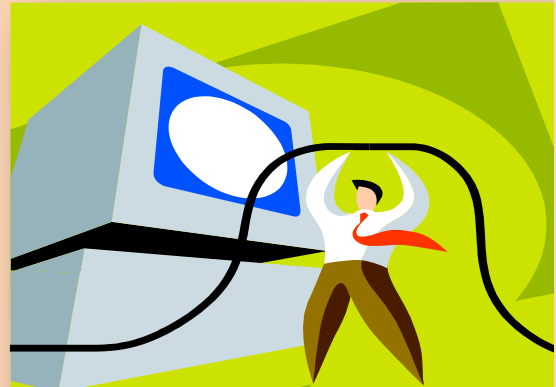


## **Analysis of Alternatives**

- ❖ *Frequent Planned upgrades to the existing WLM Scheduler.*
- ❖ *Manually delete unwanted WLM components from Lower environments and production environment to release space and overcome latency issue*
- ❖ *Convert all the jobs from WLM to more efficient automated and user friendly tool.*

## **Implemented Solution**

*After analysing and identifying the criticality of jobs and after identifying manual intervention tasks that need to be corrected /build post automated conversion client decided to convert all the jobs from Work Load Manager to more efficient automated and user friendly Control-M tool.*



## **Business Value**

*Conversion brought an value add in performance of scheduling jobs and sending the accurate results to customer within the time frame without any latency of jobs, Outages and inconsistency. Unrecoverable failures are solved and CTM Tool - allows user level access limitations and thus has avoided accidental deletions/overwrites of the code by application teams. Client is very happy as business is out of performance penalties and regulatory implications.*

## **Client Appreciations**

***“Kudos to everyone involved. This is a very significant accomplishment”***

***“Awesome job by everyone all around.”***